

EPS 360 POWER STATION



EMERALD GREEN
IS THE NEW GREEN

100% Solar & Battery Powered Trailers

SPECS

Trailer

26' long x 8'6" wide x 12' high
25,000 lb

Output Power

Continuous Output: 96kW (400 amp)
Peak Power (10 sec): 150kW

Output Voltage

3 Phase
Output voltage: 208V AC
Single Phase, Pure Sine Wave
Output Voltage: 120/240V AC

Energy Generation

PV Panels Used: ADiON PV540 G1 (540W)
Output: 10kW
Safety: UL 61730-1, UL 61730-2 certified

Energy Storage

Batteries Used: ADiON Li48 (Lithium Iron Phosphate LiFePo4)
Storage Capacity: 360kWh
Safety: UL 1973 certified

Inverter

Inverters Used: Sol-Ark 15K
Safety: UL 1741, UL 1699B certified

Charging

Charge Time w/ Supercharger: From 20% to 100%
rapid 150 amp charge, 8 hrs
Charge Capacity: 15 kW 50 amp - 28 kW 100 amp
Lifecycle (80% capacity): 6,000 cycles



CONTACT

Keith Gordon, VP of Operations
M: (917) 968-3177 • O: (917) 922-4122
E: keith@emeraldtrailers.com
www.emeraldtrailers.com

SINGLE ROOM STAR TRAILER



EMERALD GREEN
IS THE NEW GREEN

100% Solar & Battery Powered Trailers

SPECS

Trailer: 35' long; 41' long including tongue
8' wide; 10'4" wide including extended popouts
12'6" high

Rooms: Living room 141 ft², Bedroom 74 ft²
(excluding popouts or bathroom)

Stairs: 2'5" wide, extend 4' from trailer

Battery Capacity: 60 kWh

Solar Intake: 5 kW

Charger Type: 50A RV plug

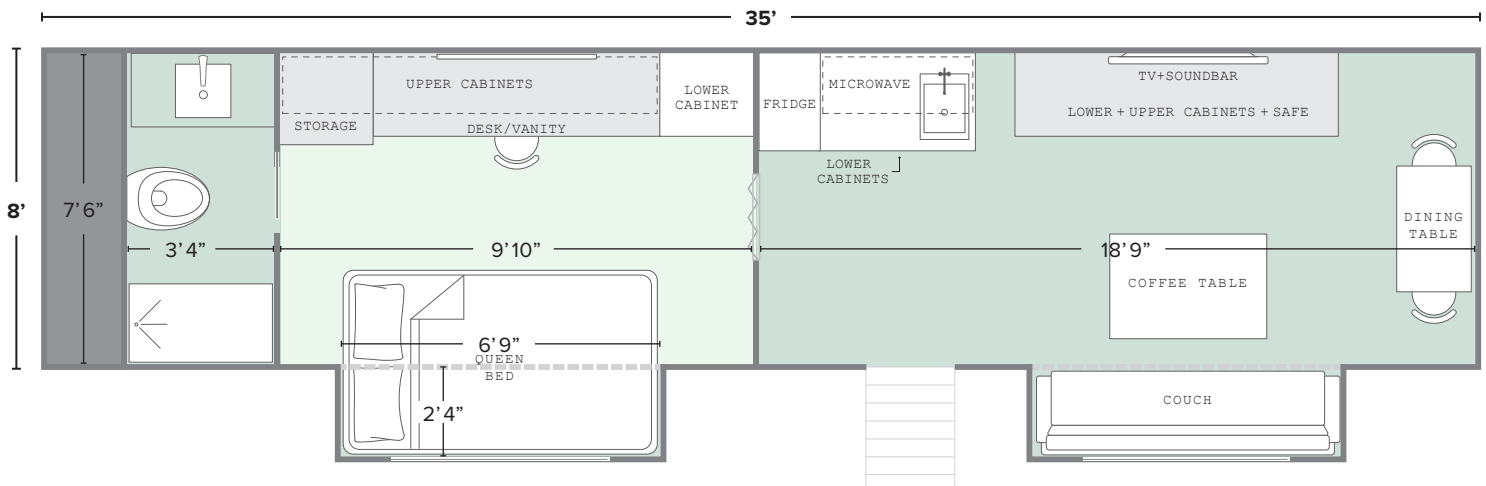
Fresh Water Tank Size: 75 gal.

Grey Water Tank Size: 48 gal.

Black Water Tank Size: 31 gal.

FEATURES

- Dual zone - Mini split HVAC
- Flat screen TV with streaming channels
- WiFi
- Euro fridge
- Microwave
- Love seat couch
- 2 seat dining area
- Full length mirror
- Private bedroom
- Queen size bed
- Hair & Makeup station with dimmable lighting
- Full bath



CONTACT

Keith Gordon, VP of Operations

M: (917) 968-3177 • O: (917) 922-4122

E: keith@emeraldtrailers.com

www.emeraldtrailers.com

2 ROOM STAR TRAILER



EMERALD GREEN
IS THE NEW GREEN

100% Solar & Battery Powered Trailers

SPECS

Trailer: 35' long; 41' long including tongue
8' wide; 10'4" wide including extended popouts
12'6" high

Rooms: 96 ft² each (excluding popouts or bathroom)

Stairs: 2'5" wide, extend 4' from trailer

Battery Capacity: 60 kWh

Solar Intake: 5 kW

Charger Type: 50A RV plug

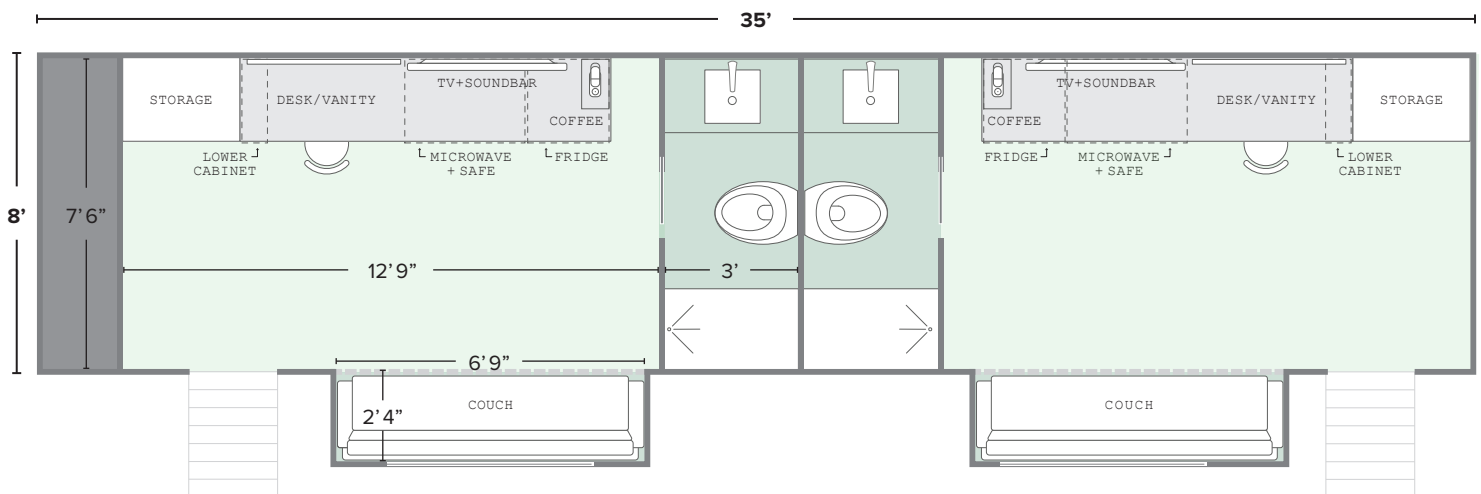
Fresh Water Tank Size: 75 gal.

Grey Water Tank Size: 28 gal.

Black Water Tank Size: 31 gal.

FEATURES

- Dual zone - Mini split HVAC
- 43" 4K TV with streaming channels
- Wi-Fi
- Refrigerator
- Bluetooth sound system
- Microwave
- Personal safe
- Full bathroom



CONTACT

Keith Gordon, VP of Operations
M: (917) 968-3177 • O: (917) 922-4122
E: keith@emeraldtrailers.com
www.emeraldtrailers.com

3 ROOM STAR TRAILER



EMERALD GREEN
IS THE NEW GREEN

100% Solar & Battery Powered Trailers

SPECS

Trailer: 43' long; 49' long including tongue
8' wide; 10'4" wide including extended popouts
12'6" high

Rooms: 68ft² each (excluding popouts or bathroom)

Stairs: 2'5" wide, extend 4' from trailer

Battery Capacity: 60 kWh

Solar Intake: 5 kW

Charger Type: 50A RV plug

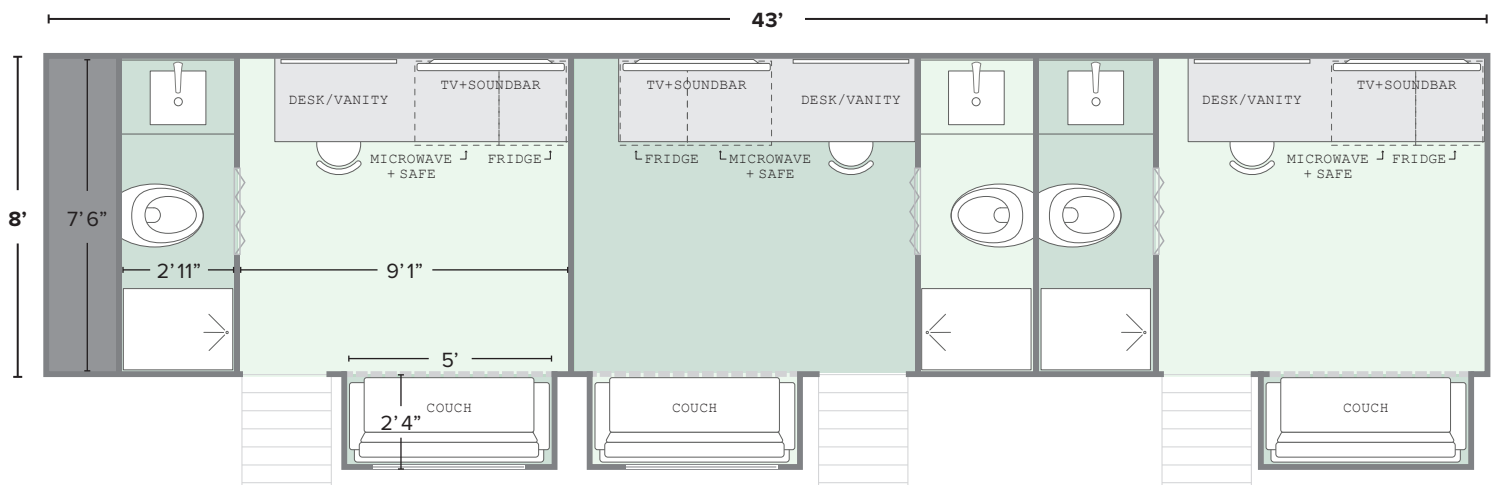
Fresh Water Tank Size: 75 gal.

Grey Water Tank Size: 28 gal.

Black Water Tank Size: 62 gal.

FEATURES

- Three-zone - Mini split HVAC
- 43" 4K TV with streaming channels
- Wi-Fi
- Refrigerator
- Bluetooth sound system
- Microwave
- Personal safe
- Full bathroom



CONTACT

Keith Gordon, VP of Operations
M: (917) 968-3177 • O: (917) 922-4122
E: keith@emeraldtrailers.com
www.emeraldtrailers.com

OFFICE



EMERALD GREEN
IS THE NEW GREEN

100% Solar & Battery Powered Trailers

SPECS

Trailer: 35' long; 41' long including tongue
8' wide; 10'4" wide including extended popouts
12'6" high

Rooms: 121 ft² each (excluding popouts)

Stairs: 2'5" wide, extend 4' from trailer

Battery Capacity: 60 kWh

Solar Intake: 5 kW

Charger Type: 50A RV plug

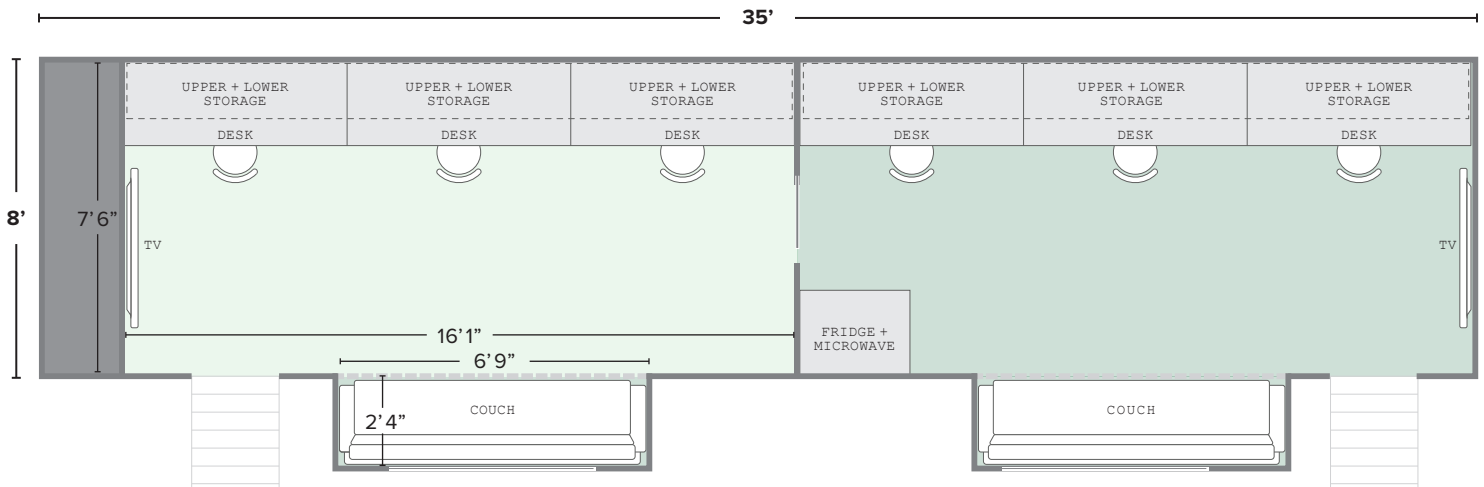
Fresh Water Tank Size: n/a

Grey Water Tank Size: n/a

Black Water Tank Size: n/a

FEATURES

- Dual zone - Mini split HVAC
- 43" 4K TV with streaming channels
- Wi-Fi
- Refrigerator
- Microwave



CONTACT

Keith Gordon, VP of Operations
M: (917) 968-3177 • O: (917) 922-4122
E: keith@emeraldtrailers.com
www.emeraldtrailers.com

8-STATION HAIR+MAKEUP



EMERALD GREEN
IS THE NEW GREEN

100% Solar & Battery Powered Trailers

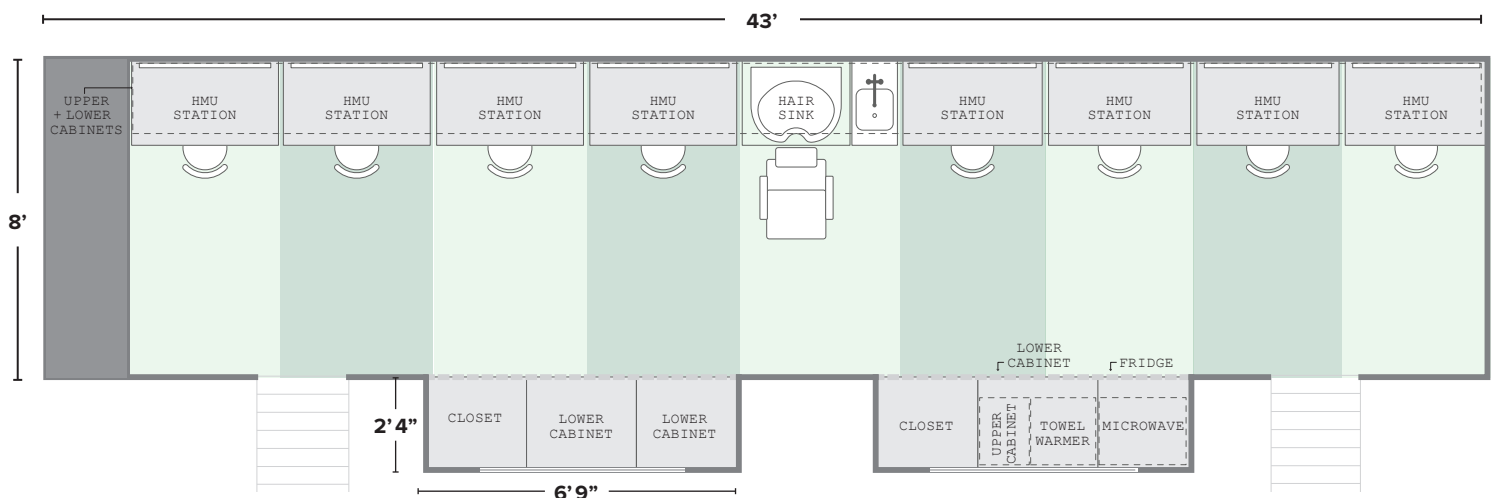
SPECS

Trailer: 43' long; 49' long including tongue
8' wide; 10'4" wide including extended popouts
12'6" high
Stairs: 2'5" wide, extend 4' from trailer

Battery Capacity: 60 kWh
Solar Intake: 5 kW
Charger Type: 50A RV plug
Fresh Water Tank Size: 75 gal.
Grey Water Tank Size: 48 gal.
Black Water Tank Size: n/a

FEATURES

- Multi-zone mini-split HVAC
- Wi-Fi
- Wig storage
- Dimmable LED lighting
- Back-of-head spotlight
- Hair sink
- Refrigerator
- Microwave
- Towel warmer
- Espresso machine
- Bluetooth audio system



CONTACT

Keith Gordon, VP of Operations
M: (917) 968-3177 • O: (917) 922-4122
E: keith@emeraldtrailers.com
www.emeraldtrailers.com

10-STATION HAIR+MAKEUP



EMERALD GREEN
IS THE NEW GREEN

100% Solar & Battery Powered Trailers

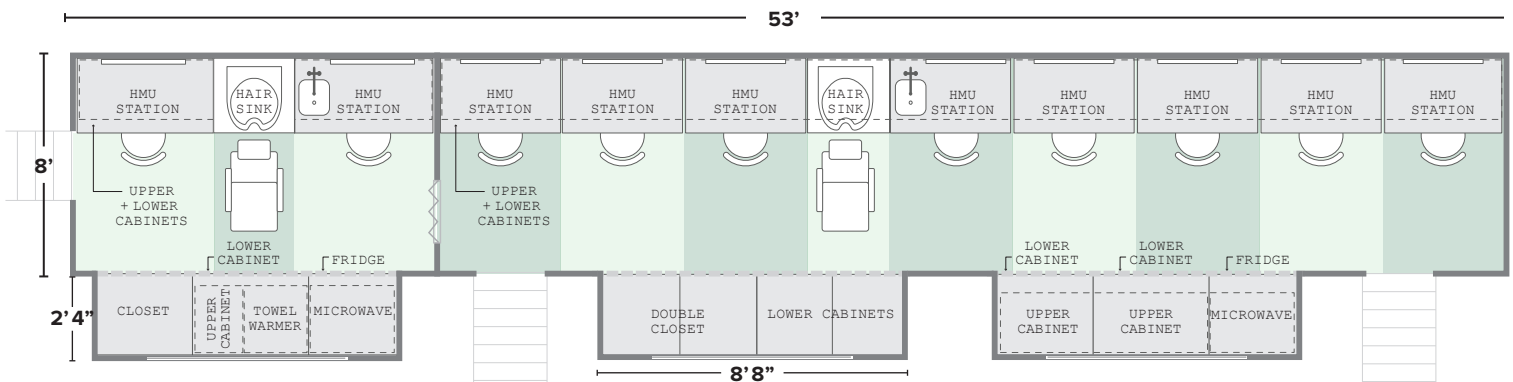
SPECS

Trailer: 53' long
8' wide; 10'4" wide including extended popouts
13'5" high
Stairs: 2'5" wide, extend 4' from trailer

Battery Capacity: 140 kWh
Solar Intake: 7.5 kW
Charger Type: 100A 4 pin
Fresh Water Tank Size: 210 gal.
Grey Water Tank Size: 210 gal.
Black Water Tank Size: n/a

FEATURES

- Multi-zone mini-split HVAC
- Wi-Fi
- Cabinet and wig storage
- LED lighting with dimming capabilities
- Back-of-head spotlight
- Hair sink
- Refrigerator
- Microwave
- Towel warmer
- Espresso machine
- Bluetooth audio system



CONTACT

Keith Gordon, VP of Operations
M: (917) 968-3177 • O: (917) 922-4122
E: keith@emeraldtrailers.com
www.emeraldtrailers.com

WARDROBE



EMERALD GREEN
IS THE NEW GREEN

100% Solar & Battery Powered Trailers

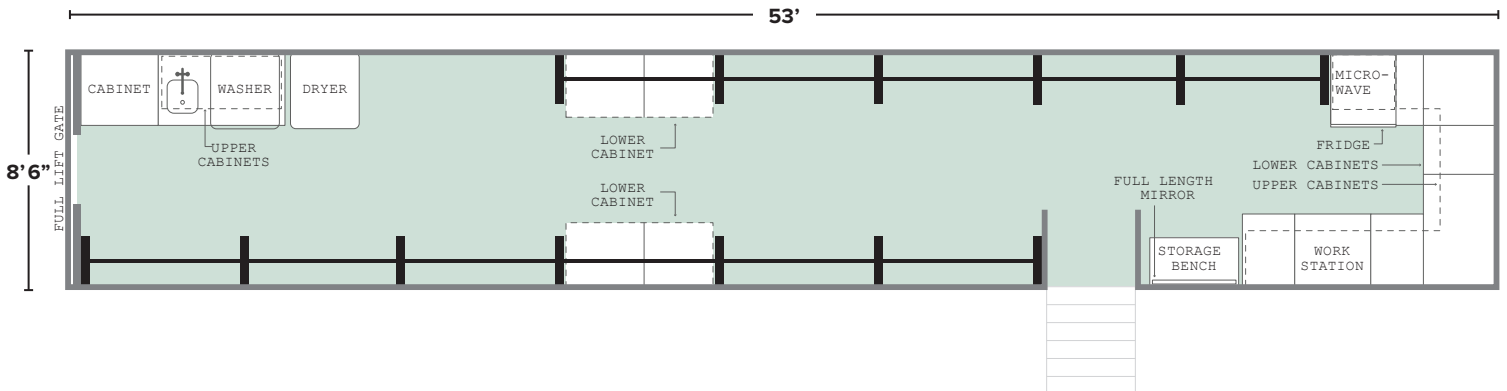
SPECS

Trailer: 53' long
8'6" wide
13'5" high
Stairs: 2'5" wide, extend 4' from trailer

Battery Capacity: 80 kWh
Solar Intake: 7.5 kW
Charger Type: 100A 4 pin
Fresh Water Tank Size: 210 gal.
Grey Water Tank Size: 210 gal.
Black Water Tank Size: n/a

FEATURES

- Full-length adjustable multi-level bar system
- Dual-zone climate control
- Refrigerator & Microwave
- Full-size washer and dryer
- Wi-Fi
- Deep laundry sink
- Workstation



CONTACT

Keith Gordon, VP of Operations
M: (917) 968-3177 • O: (917) 922-4122
E: keith@emeraldtrailers.com
www.emeraldtrailers.com

HONEYWAGON



EMERALD GREEN
IS THE NEW GREEN

100% Solar & Battery Powered Trailers

SPECS

Trailer: 53' long
8'6" wide
13'5" high

Rooms: Front office 78 ft², All others 38 ft²

Stairs: 2'5" wide, extend 4' from trailer

Battery Capacity: 80 kWh

Solar Intake: 7.5 kW

Charger Type: 100A 4 pin

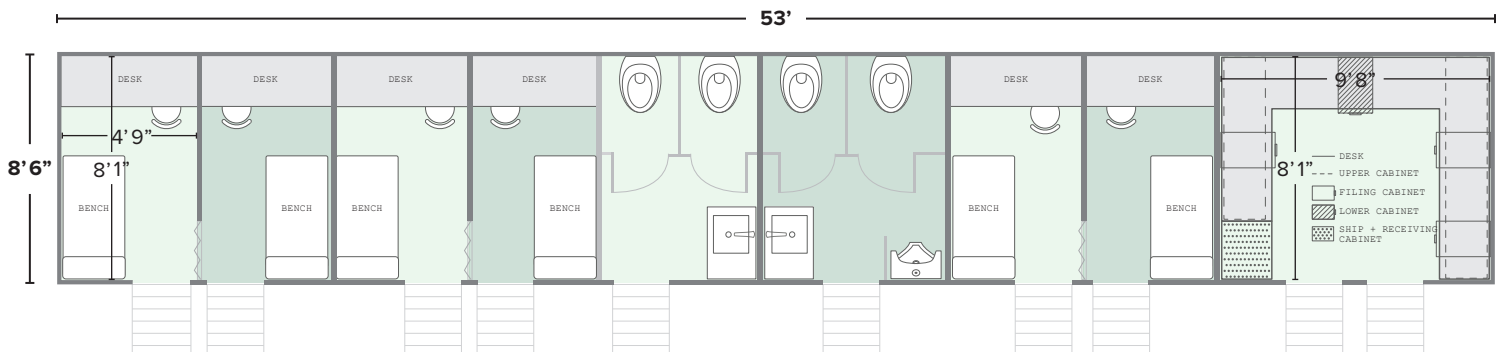
Fresh Water Tank Size: 210 gal.

Grey Water Tank Size: n/a

Black Water Tank Size: 420 gal.

FEATURES

- 8 offices
- 6 zone multi-split HVACs
- Multi-stall restrooms
- Wi-Fi



CONTACT

Keith Gordon, VP of Operations

M: (917) 968-3177 • O: (917) 922-4122

E: keith@emeraldtrailers.com

www.emeraldtrailers.com